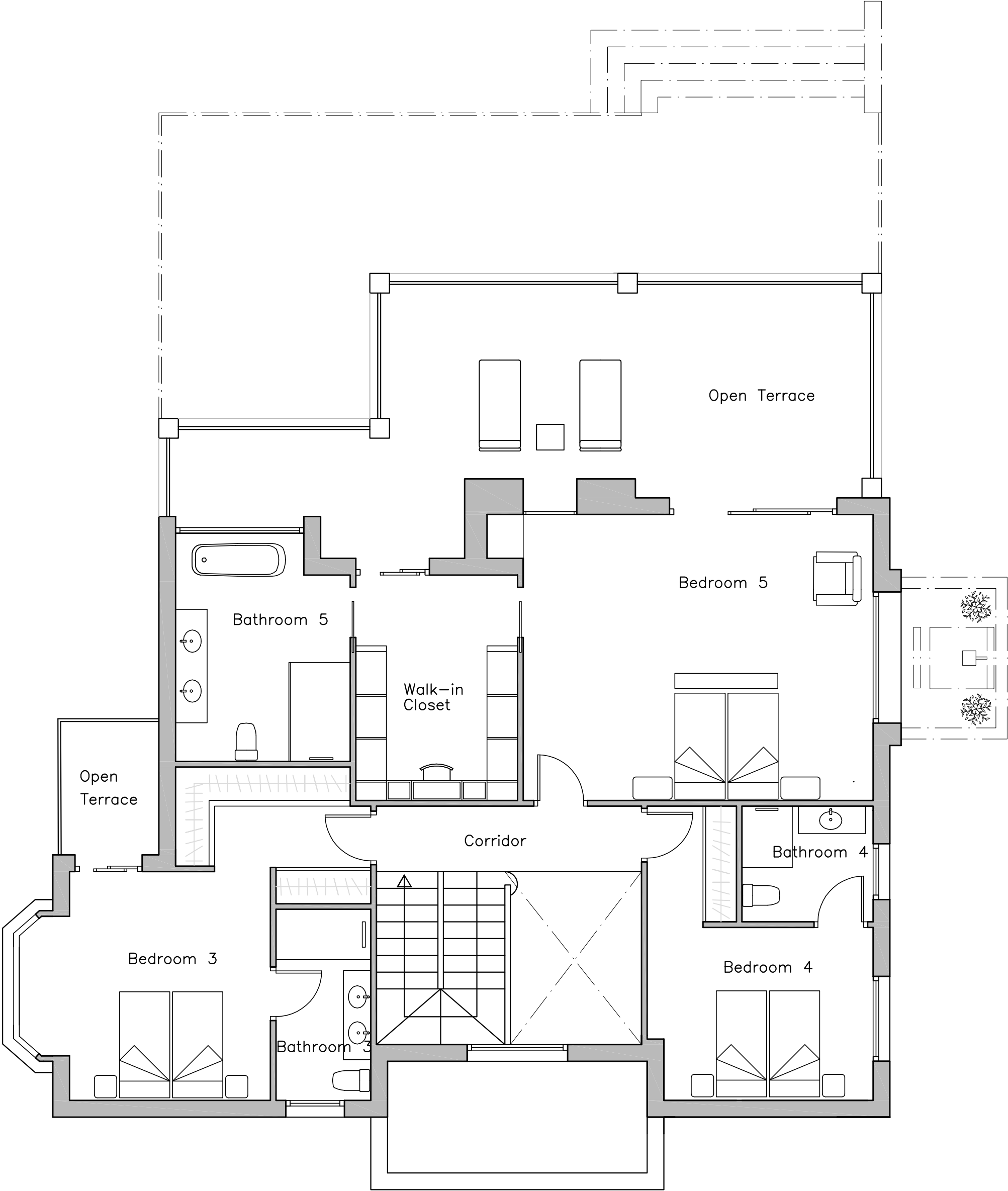


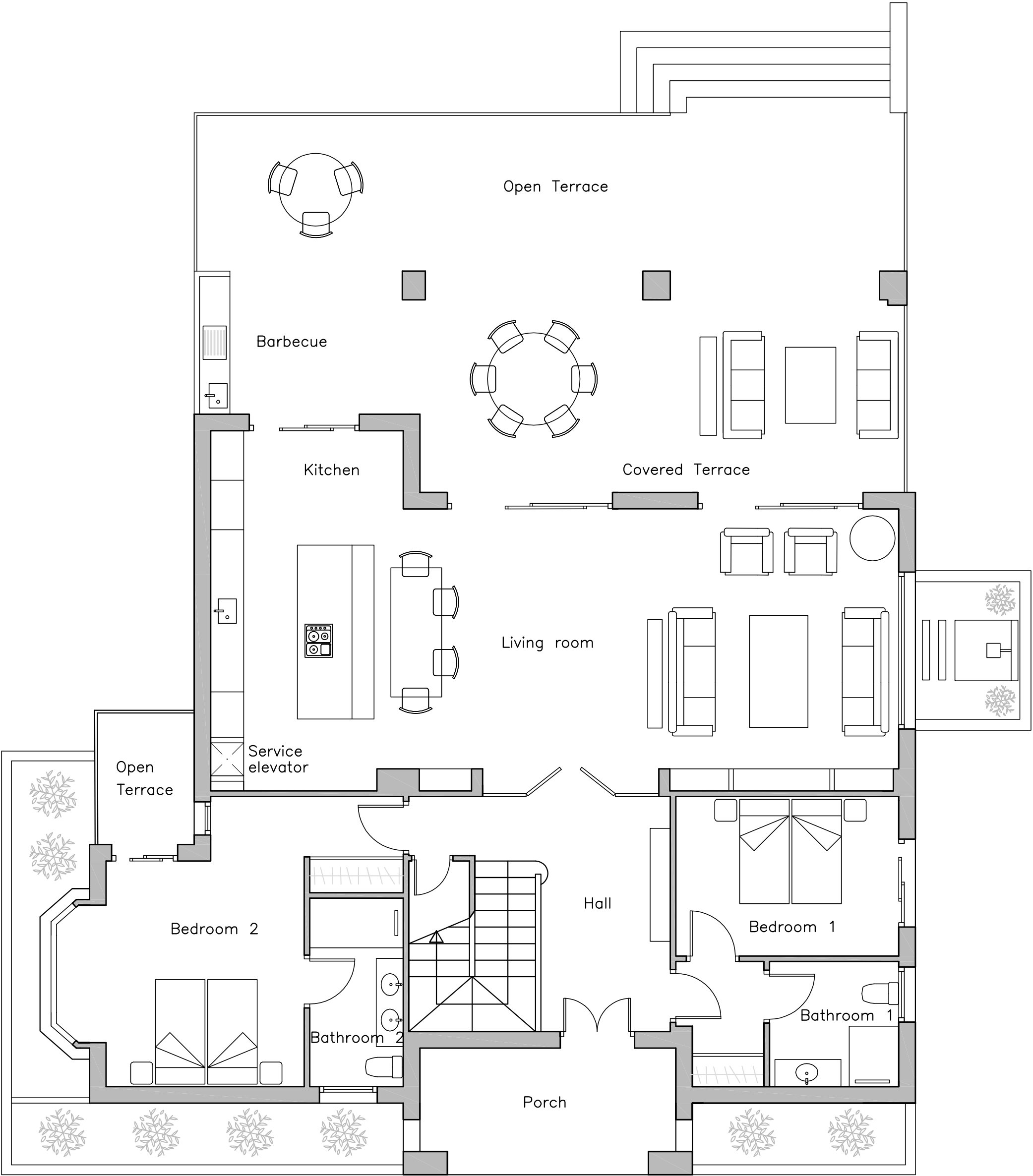
PLOT: 1233m² | BUILD: 470m² | BEDS: 6 | BATHS: 7 | COVERED TERRACES: 48m² | OPEN TERRACE: 381m² | SWIMMING POOL: 32m²

BASEMENT



PLOT: 1233m² | BUILD: 470m² | BEDS: 6 | BATHS: 7 | COVERED TERRACES: 48m² | OPEN TERRACE: 381m² | SWIMMING POOL: 32m²

FIRST FLOOR



PLOT: 1233m² | BUILD: 470m² | BEDS: 6 | BATHS: 7 | COVERED TERRACES: 48m² | OPEN TERRACE: 381m² | SWIMMING POOL: 32m²

GROUND FLOOR