

CORTIJO 2
PLANTA BAJA

3 DORMITORIOS - 3,5 BAÑOS

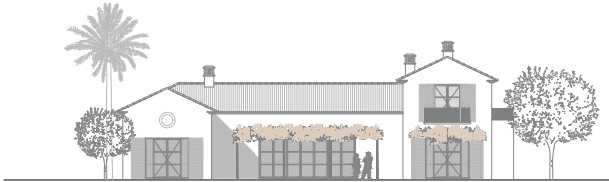
SUP. PLANTA ALTA:	57,00 m ²
SUP. PLANTA BAJA:	206,50 m ²
SUP. PLANTA SÓTANO:	78,50 m ²
TOTAL SUP. VIVIENDA:	342,00 m²
SUP. TERRAZA:	116,60 m ²
SUP. PISCINA + JARDÍN:	548,82 - 1,036,43 m ²
SUPERFICIE PARCELA:	871,93 - 1,359,54 m ²

CORTIJO 2
GROUND FLOOR

3 BEDROOMS - 3,5 BATHROOMS

FIRST FLOOR AREA:	57,00 m ²
GROUND FLOOR AREA:	206,50 m ²
BASEMENT FLOOR AREA:	78,50 m ²
TOTAL AREA	342,00 m²
TERRACE:	116,60 m ²
POOL + GARDEN AREA:	548,82 - 1,036,43 m ²
PLOT AREA:	871,93 - 1,359,54 m ²





CORTIJO 2
PLANTA ALTA Y SÓTANO

3 DORMITORIOS - 3,5 BAÑOS

SUP. PLANTA ALTA:	57,00 m ²
SUP. PLANTA BAJA:	206,50 m ²
SUP. PLANTA SÓTANO:	78,50 m ²
TOTAL SUP. VIVIENDA:	342,00 m²
SUP. TERRAZA	116,60 m ²
SUP. PISCINA + JARDÍN	548,82 - 1,036,43 m ²
SUPERFICIE PARCELA	871,93 - 1,359,54 m ²

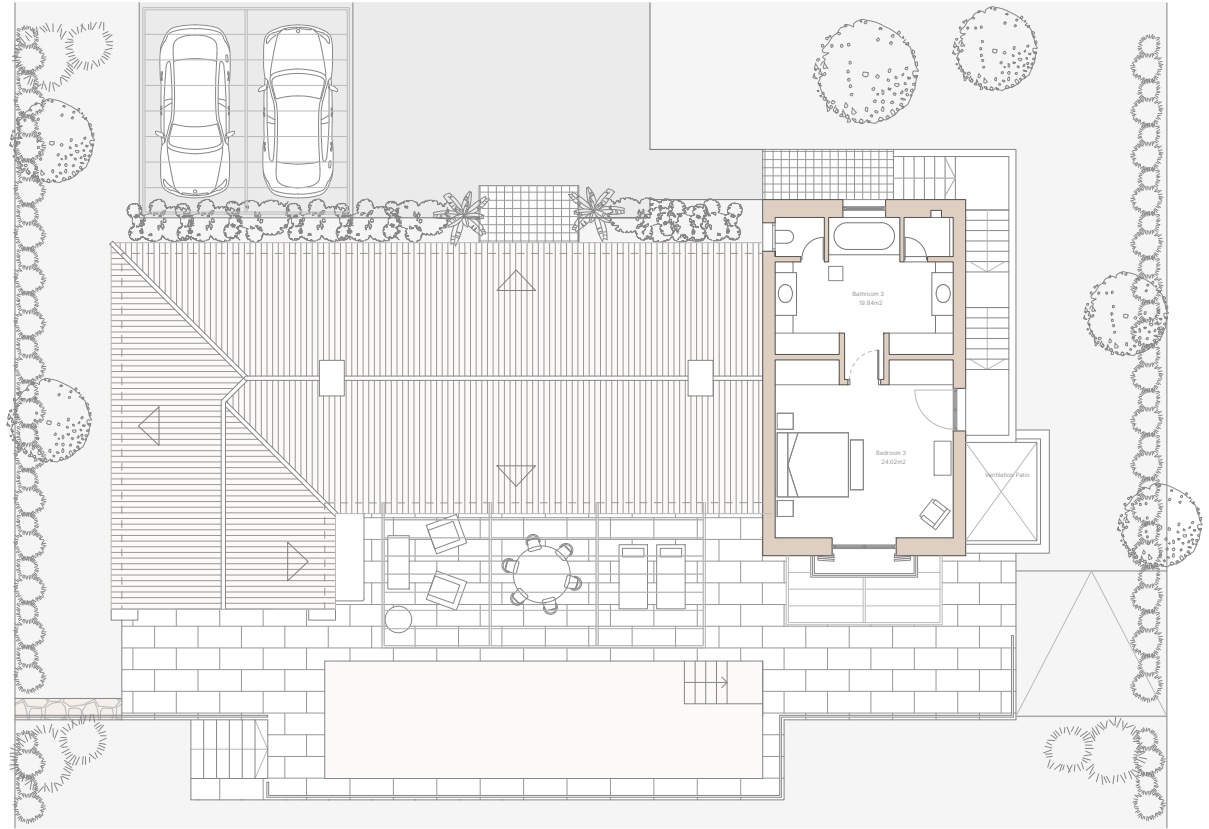
2 PLAZAS DE APARCAMIENTO Y TRASTERO

FIRST FLOOR AND BASEMENT

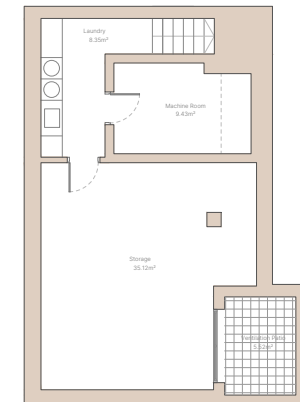
3 BEDROOMS - 3,5 BATHROOMS

FIRST FLOOR AREA	57,00 m ²
GROUND FLOOR AREA	206,50 m ²
BASEMENT FLOOR AREA	78,50 m ²
TOTAL AREA	342,00 m²
TERRACE	116,60 m ²
POOL + GARDEN AREA:	548,82 - 1,036,43 m ²
PLOT AREA	871,93 - 1,359,54 m ²

2 PARKING SPACES AND STORAGE ROOM



PLANTA ALTA
FIRST FLOOR



SÓTANO
BASEMENT