

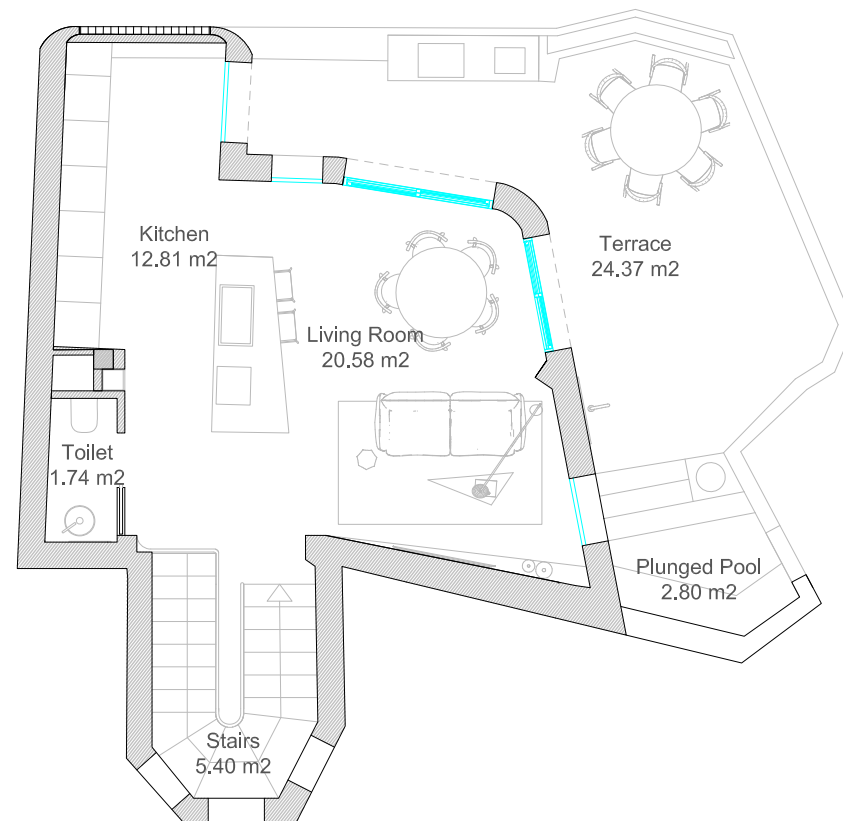
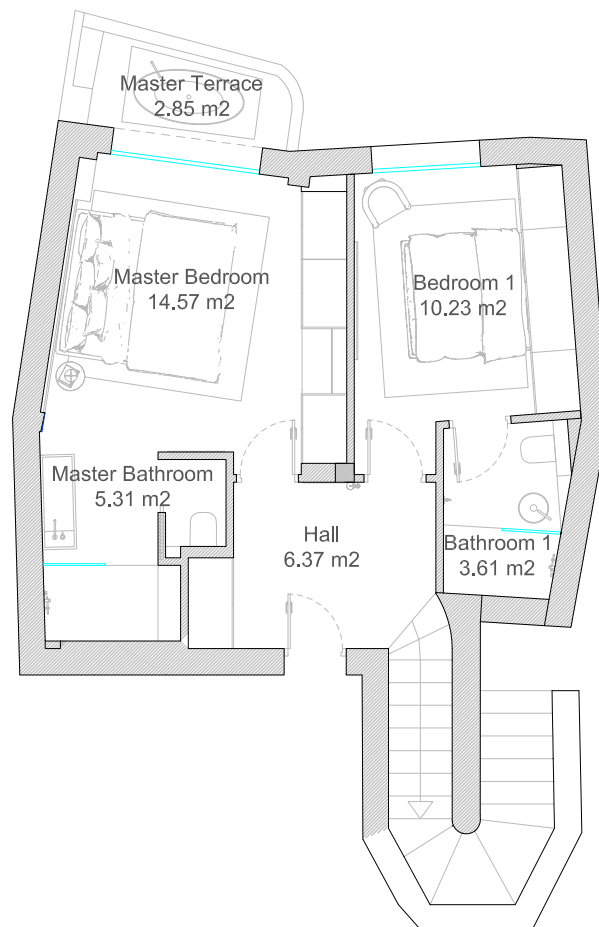
## TOTAL SURFACES

Terraces sqm:  
Ground Floor 2,76m2  
1st Floor 26m2

Interior sqm: 84m2  
Interior sqm ww: 82m2

## EXPLICATION TABLE

NAME	AREA
Hall	6.37 m2
Master Bedroom	14.57 m2
Master Bathroom	5.31 m2
Bedroom 1	10.23 m2
Bathroom 1	3.61 m2
Stairs	5.40 m2
Living Room	20.58 m2
Kitchen	12.81 m2
Toilet	1.74 m2
Master Terrace	2.85 m2
Terrace	24.37 m2



www.normafranck.com

Casa KALO

## FLOOR PLANS

N° Project:

Date:

Drew by:

Checked by:

NFD

Scale:

**A101**

1 : 100