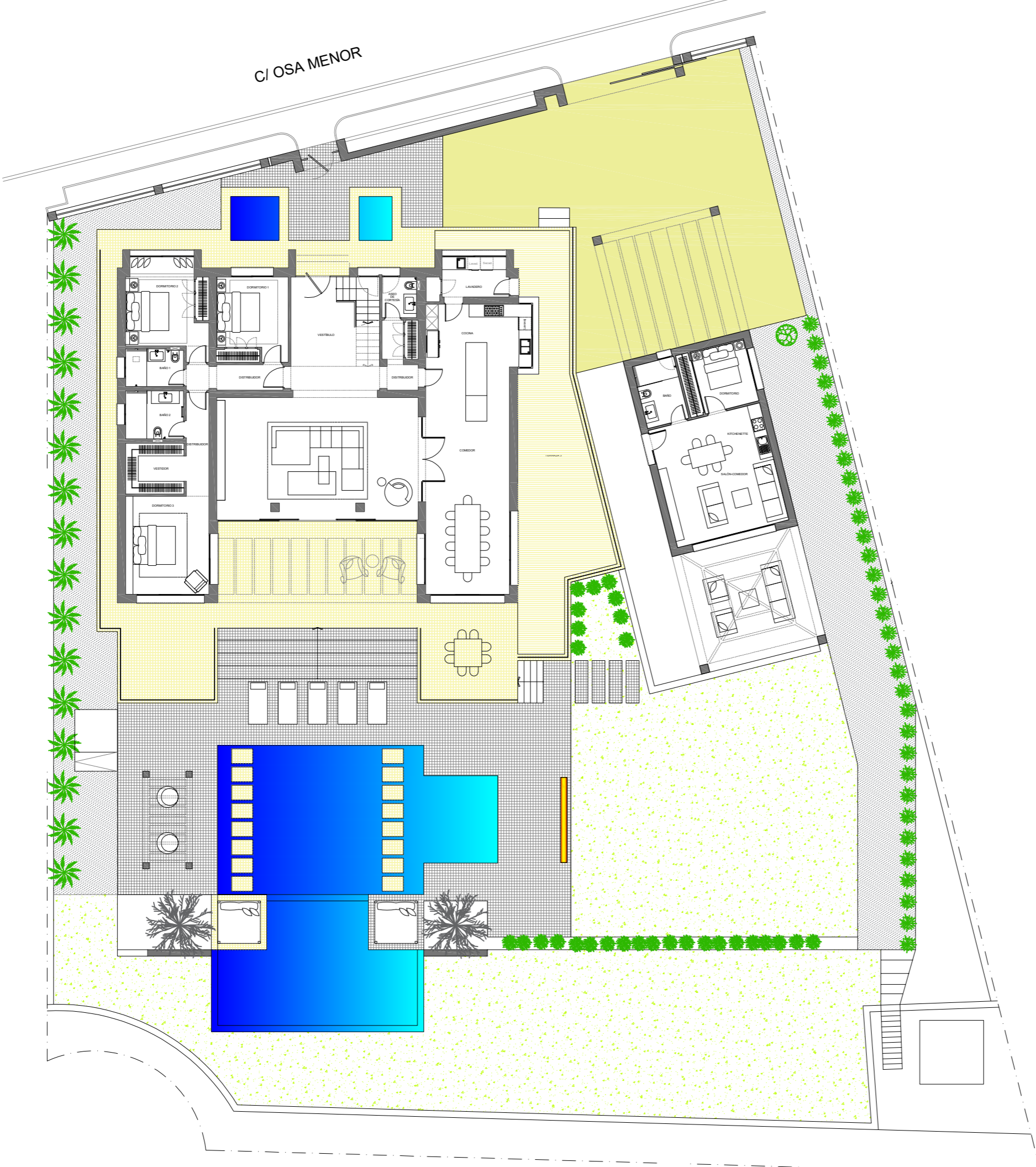
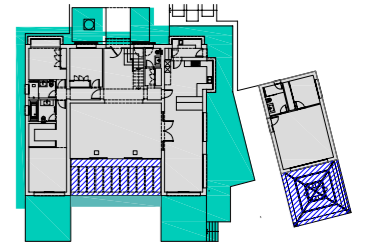




C/ OSA MENOR

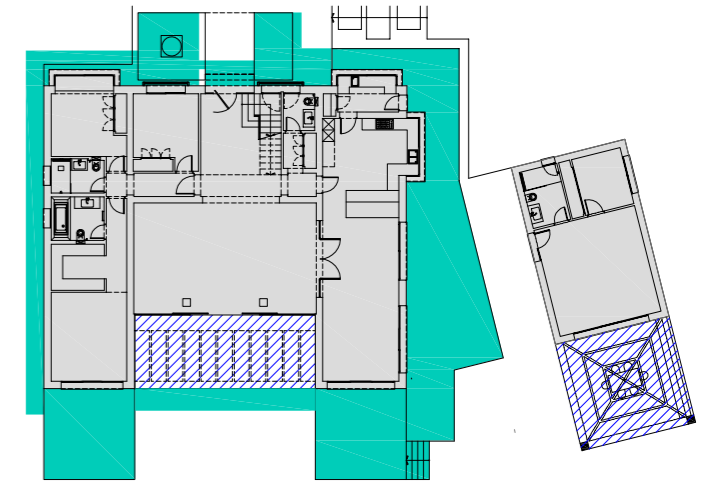


C/ CRUZ DEL SUR



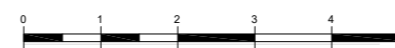
PLANTA BAJA	SUPERFICIE	CONSTRUIDA
	SUPERFICIE CONSTRUIDA	VILLA 269.65m ² GUEST HOUSE 57.73m ²
	PORCHES	MAIN VILLA 35.52m ² GUEST HOUSE 34.62m ²
	TERRAZAS	MAIN VILLA 165.68m ²



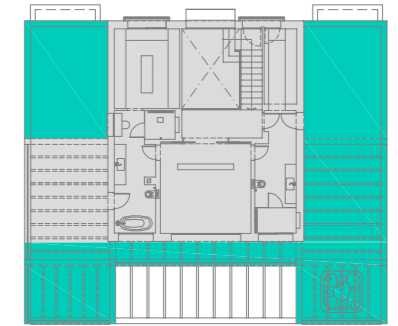
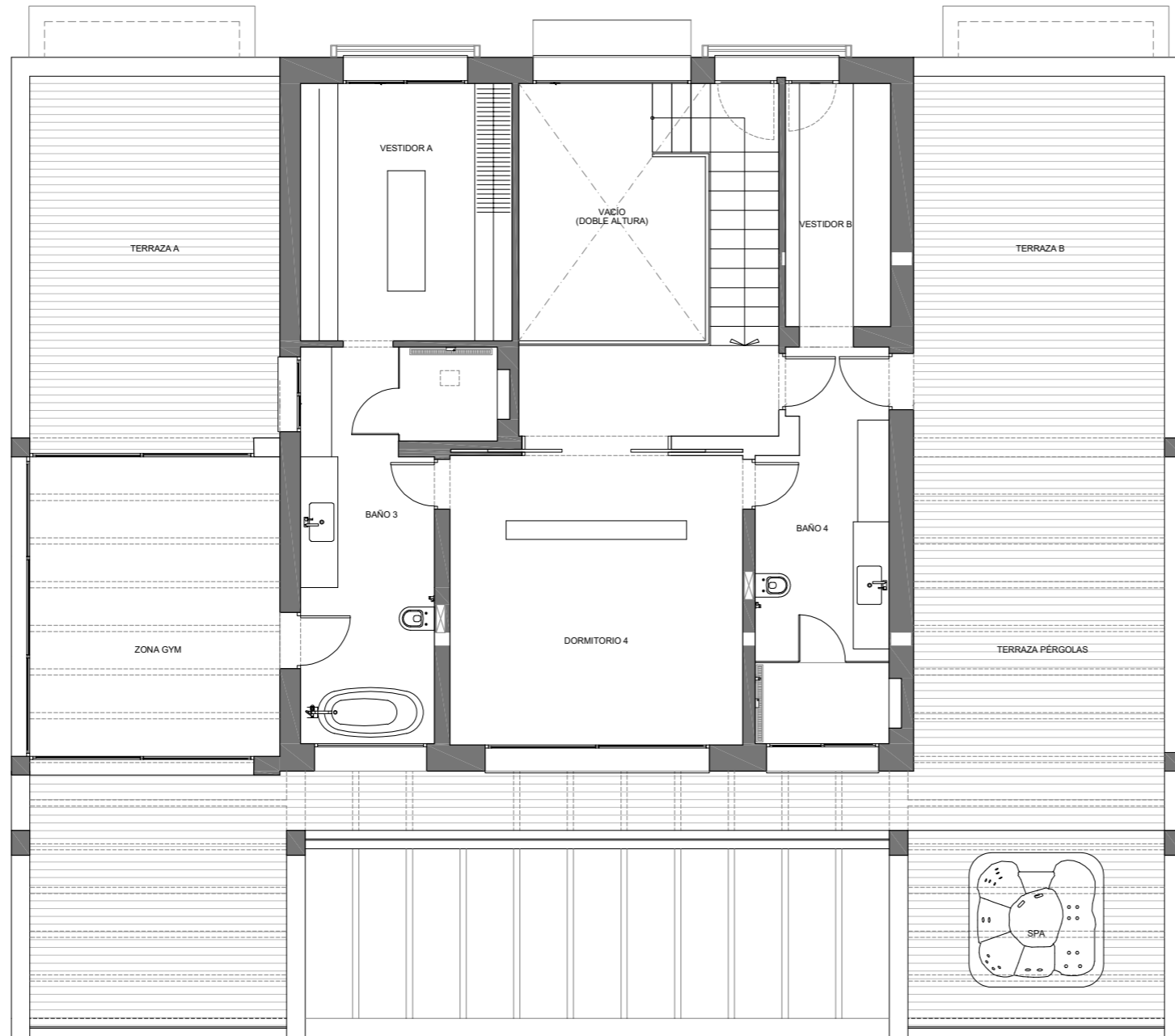



PLANTA BAJA	SUPERFICIE	CONSTRUIDA	
	SUPERFICIE CONSTRUIDA	VILLA	269.65m ²
		GUEST HOUSE	57.73m ²
	PORCHES	MAIN VILLA	35.92m ²
		GUEST HOUSE	34.62m ²
	TERRAZAS	MAIN VILLA	165.68m ²

DISTRIBUCIÓN Y SUPERFICIES DE PLANTA BAJA

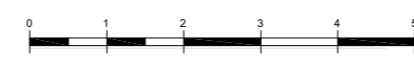


VILLA SOPHIA	
OBRA:	VIVIENDA UNIFAMILIAR AISLADA
SITUACION:	CALLE OSA MENOR Nº8. URB. NUEVA ANDALUCÍA T.M. DE MARBELLA, MÁLAGA



PLANTA PRIMERA	SUPERFICIE	CONSTRUIDA
	SUPERFICIE CONSTRUIDA	MAIN VILLA GYM AREA 269.65m ² 23.35m ²
	PORCHES	
	TERRAZAS	MAIN VILLA 127.76m ²

PLANTA ALTA



VILLA SOPHIA	
OBRA:	VIVIENDA UNIFAMILIAR AISLADA
SITUACION:	CALLE OSA MENOR Nº8. URB. NUEVA ANDALUCÍA T.M. DE MARBELLA. MÁLAGA