

An aerial photograph of a forest floor. A dark grey, textured path or stream bed runs diagonally from the bottom right towards the top right. The surrounding forest floor is covered in a dense layer of golden-brown, needle-like debris, likely pine needles, which are scattered across a lighter greyish-brown soil or leaf litter. The overall scene is captured from a high angle, showing the intricate patterns of the forest floor.

FLOOR PLANS

TYPE A



PLANTA BAJA

Superficie Construida	121,14 m ²
Terrazas Cubiertas	31,80 m ²
Terrazas No Cubiertas	51,8 m ²
Piscina	41,6 m ²

PRIMERA PLANTA

Superficie Construida	121,55 m ²
Terrazas No Cubiertas	49,4 m ²

SÓTANO

Superficie Construida	161,05 m ²
-----------------------	-----------------------

GROUND FLOOR

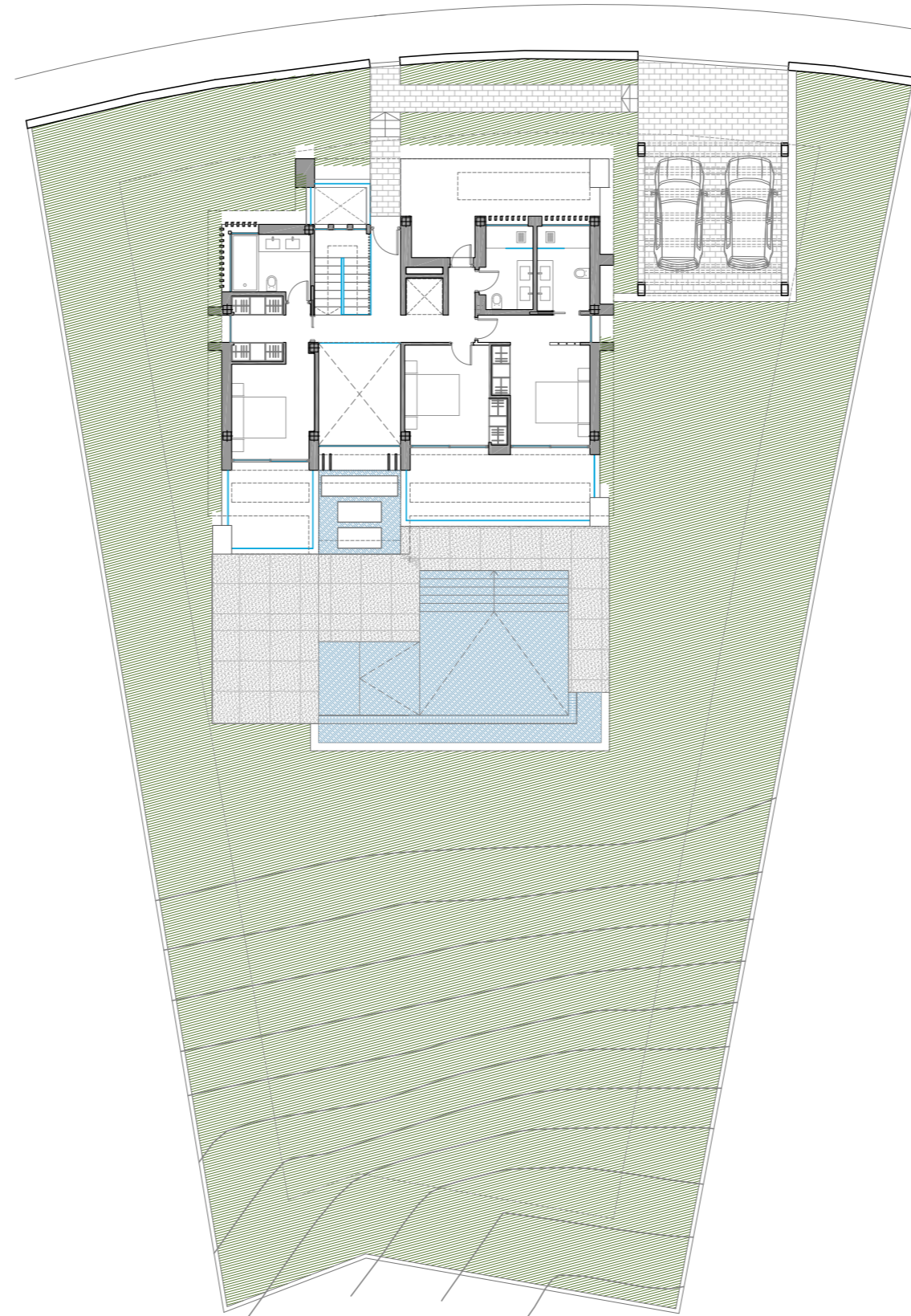
Built Area	121,14 m ²
Covered Terraces	31,80 m ²
Uncovered Terraces	51,8 m ²
Pool	41,6 m ²

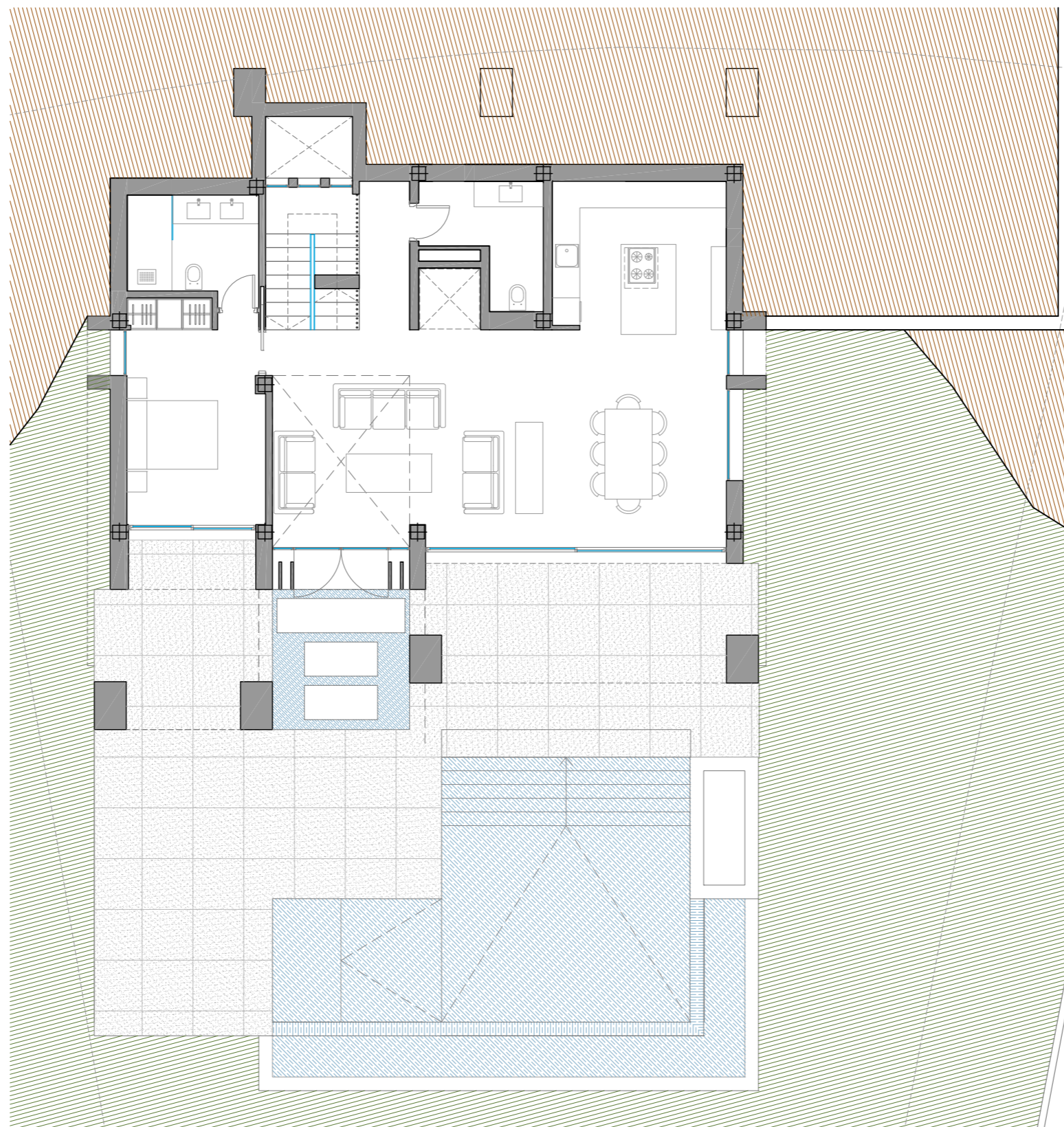
FIRST FLOOR

Built Area	121,55 m ²
Uncovered Terraces	49,4 m ²

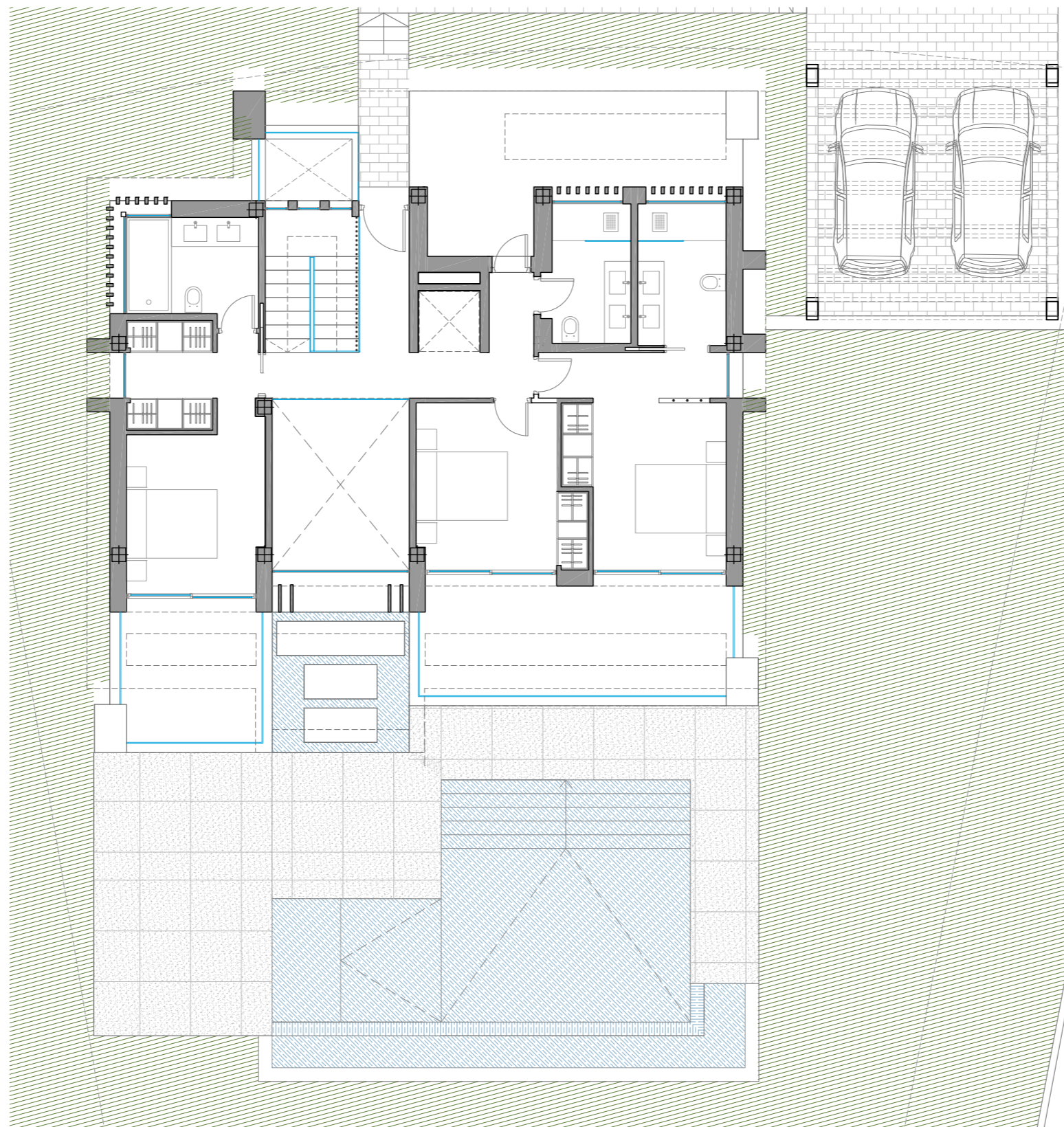
BASEMENT

Built Area	161,05 m ²
------------	-----------------------



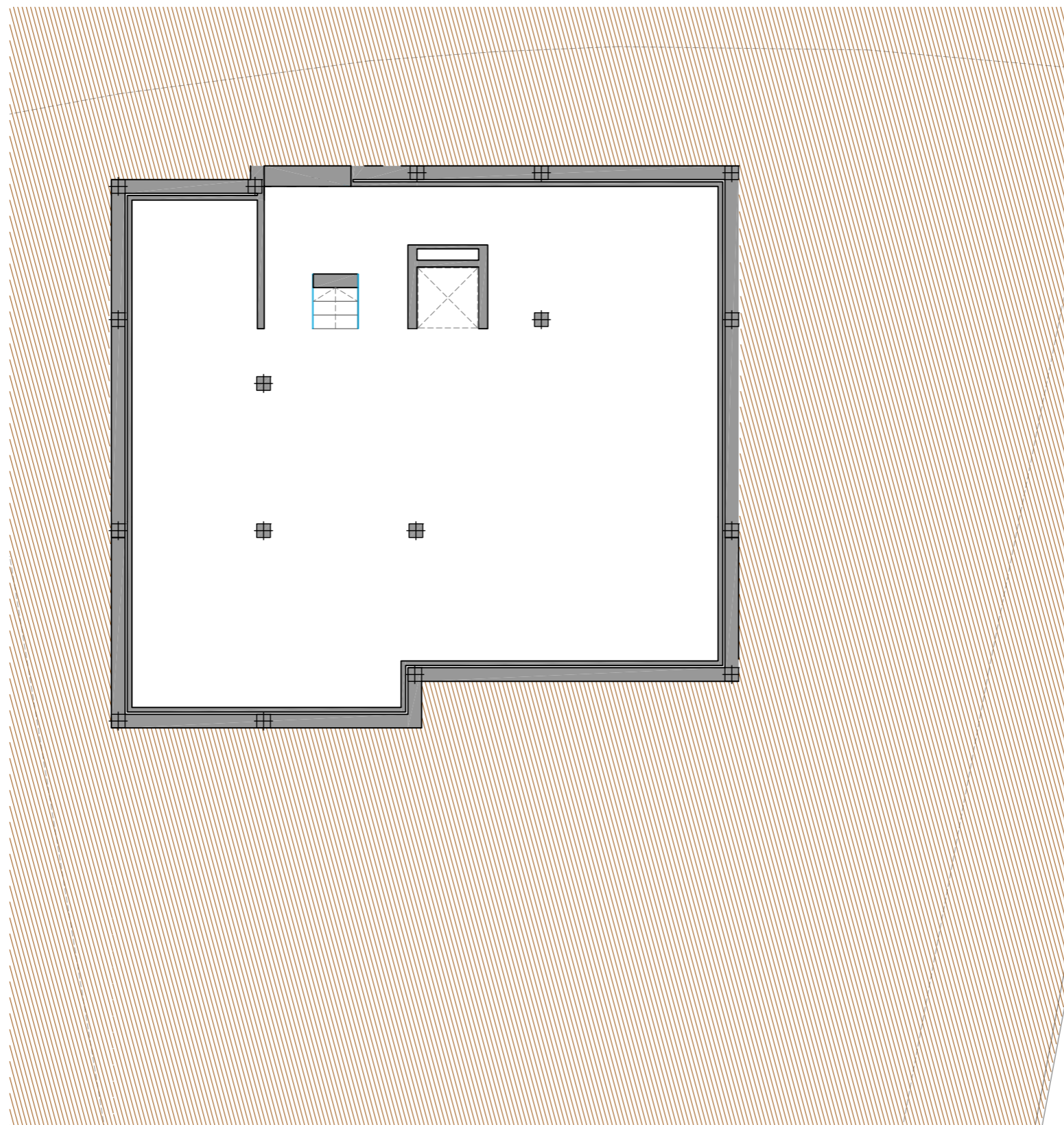


Built Area	121,14 m ²
Covered Terraces	31,80 m ²
Uncovered Terraces	51,8 m ²
Pool	41,6 m ²



Built Area 121,55 m²

Uncovered Terraces 49,4 m²



Built Area

161,05 m²

An aerial photograph of a forest floor. A dark grey, textured path or stream bed runs diagonally from the bottom right towards the top right. The surrounding forest floor is covered in a dense layer of golden-brown, needle-like debris, likely from a coniferous forest. The lighting is bright, creating high contrast between the dark path and the sunlit forest floor.

FLOOR PLANS

TYPE B



PLANTA BAJA

Superficie Construida	121,14 m ²
Terrazas Cubiertas	31,80 m ²
Terrazas No Cubiertas	51,8 m ²
Piscina	41,6 m ²

PRIMERA PLANTA

Superficie Construida	121,55 m ²
Terrazas No Cubiertas	49,4 m ²

SÓTANO

Superficie Construida	161,05 m ²
-----------------------	-----------------------

GROUND FLOOR

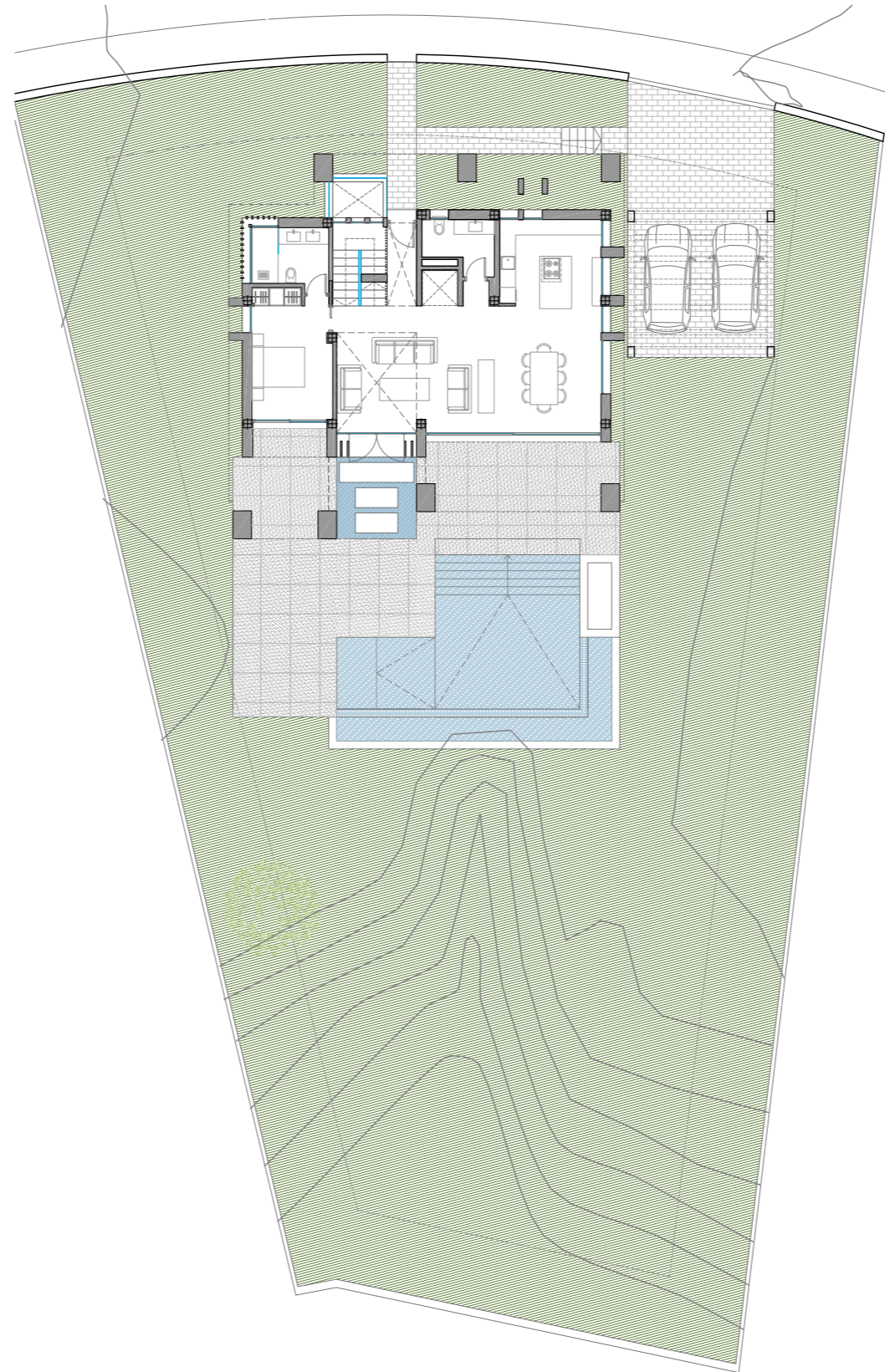
Built Area	121,14 m ²
Covered Terraces	31,80 m ²
Uncovered Terraces	51,8 m ²
Pool	41,6 m ²

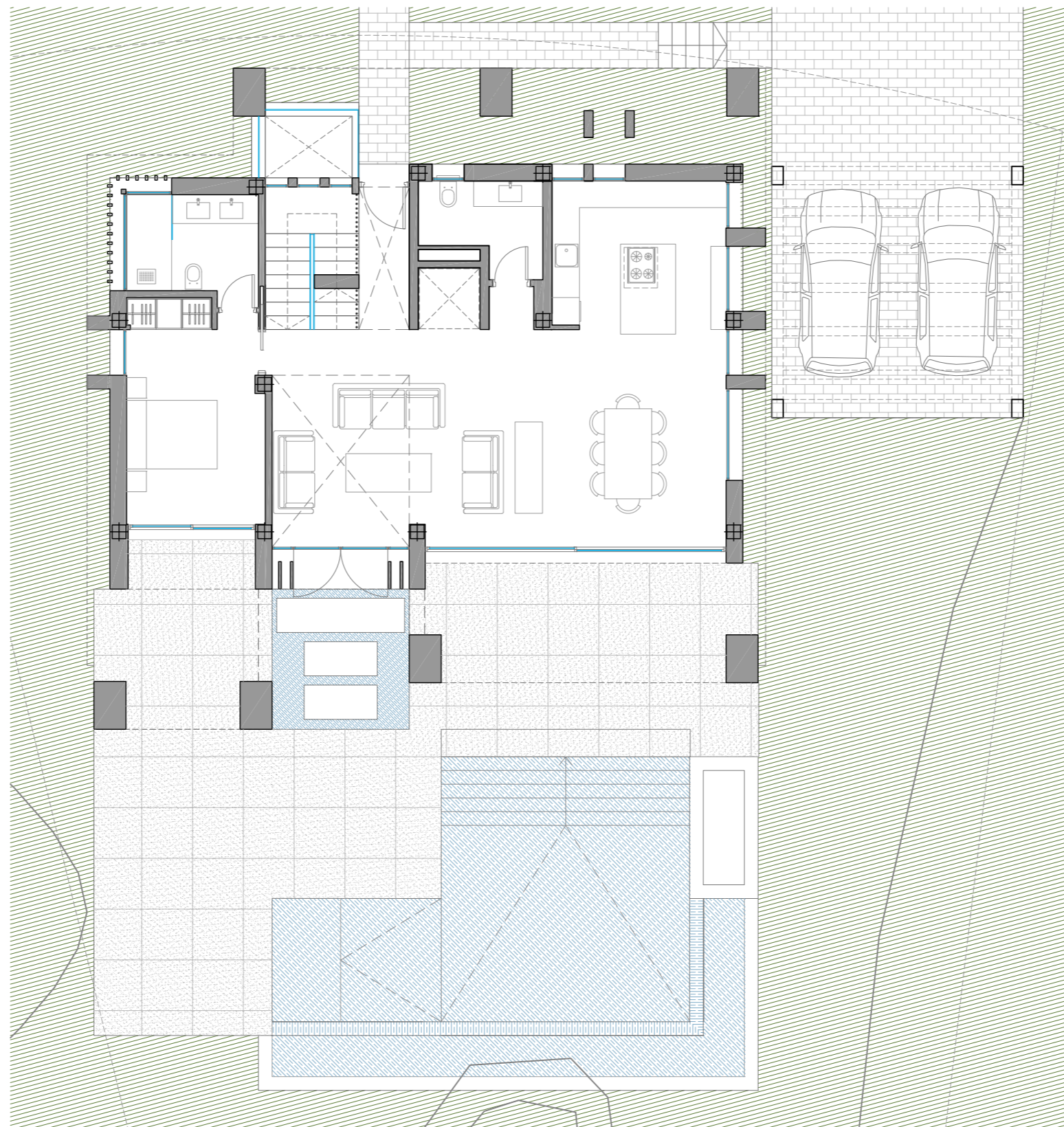
FIRST FLOOR

Built Area	121,55 m ²
Uncovered Terraces	49,4 m ²

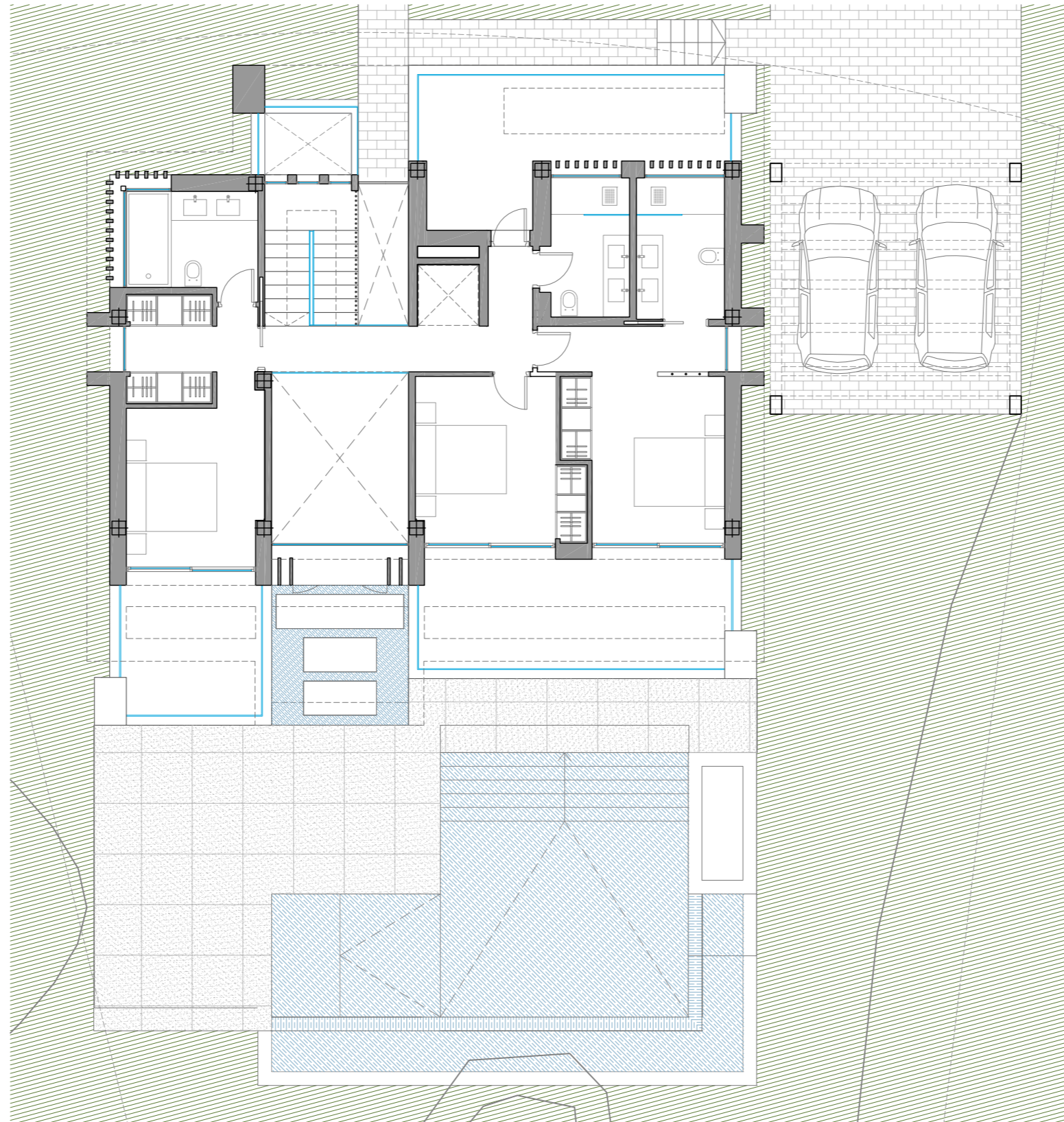
BASEMENT

Built Area	161,05 m ²
------------	-----------------------



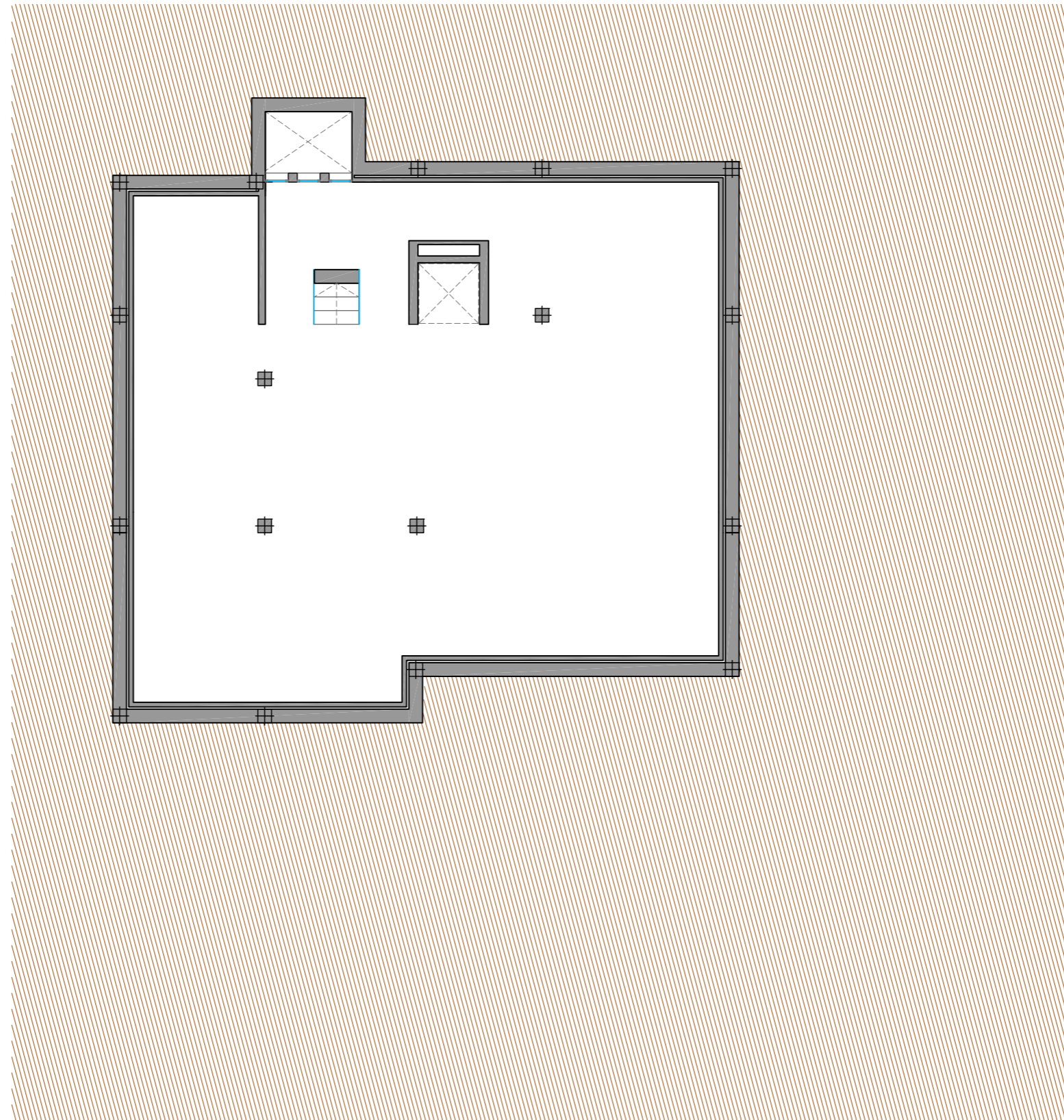


Built Area	121,14 m ²
Covered Terraces	31,80 m ²
Uncovered Terraces	51,8 m ²
Pool	41,6 m ²



Built Area 121,55 m²

Uncovered Terraces 49,4 m²



Built Area

161,05 m²

An aerial photograph of a forest floor. A dark grey, textured path or stream bed runs diagonally from the bottom right towards the top right. The surrounding forest floor is covered in a dense layer of golden-brown, needle-like debris, likely pine needles, which are scattered across a lighter greyish-brown soil or leaf litter. The overall scene is captured from a high angle, showing the intricate patterns of the forest floor.

FLOOR PLANS

TYPE C



PLANTA BAJA

Superficie Construida	98,05 m ²
Terrazas Cubiertas	33,08 m ²
Piscina	34,8 m ²

PRIMERA PLANTA

Superficie Construida	88,68 m ²
Terrazas	29,02 m ²

SÓTANO

Superficie Construida	120,17 m ²
-----------------------	-----------------------

GROUND FLOOR

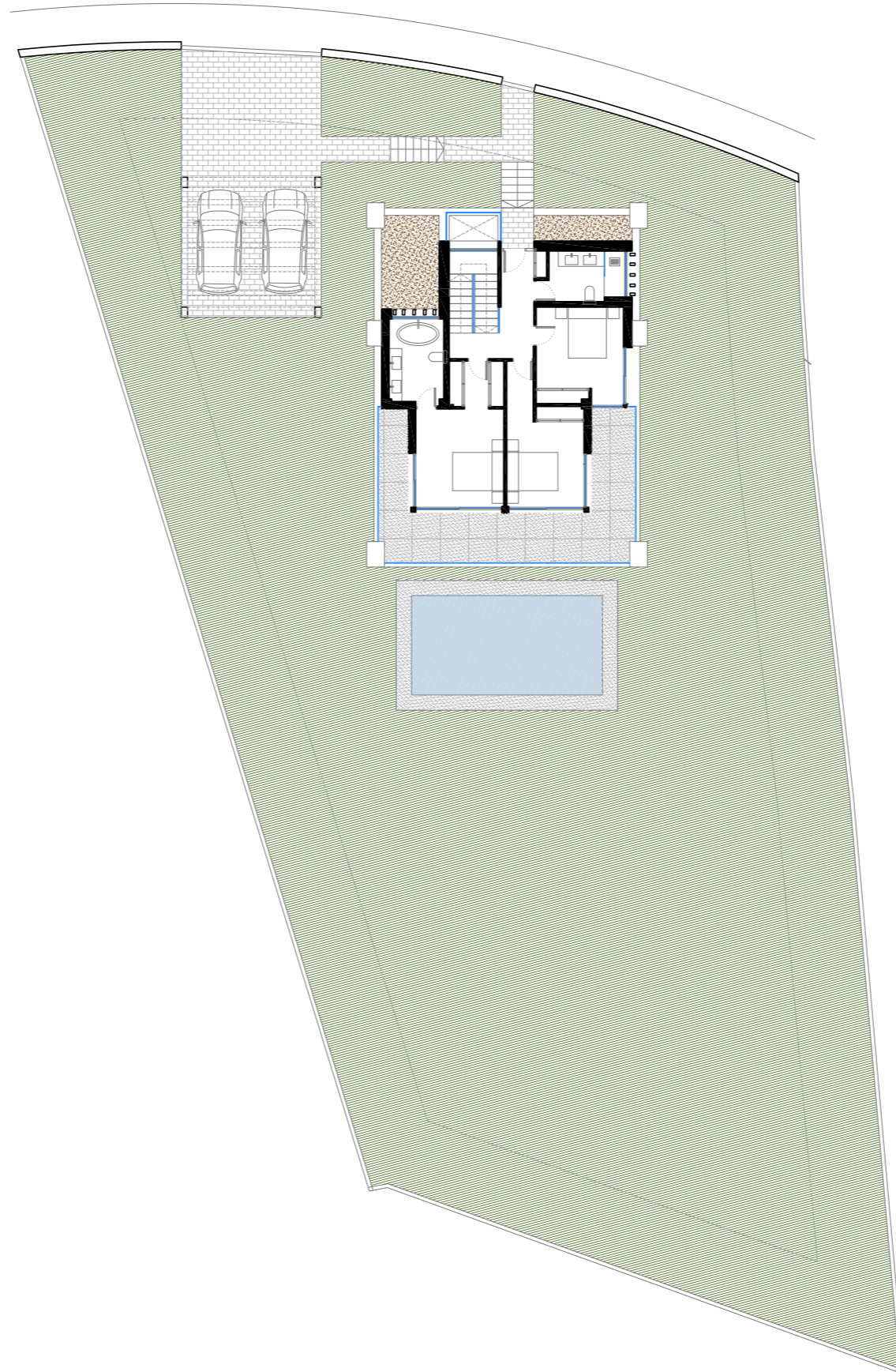
Built Area	98,05 m ²
Covered Terraces	33,08 m ²
Pool	34,8 m ²

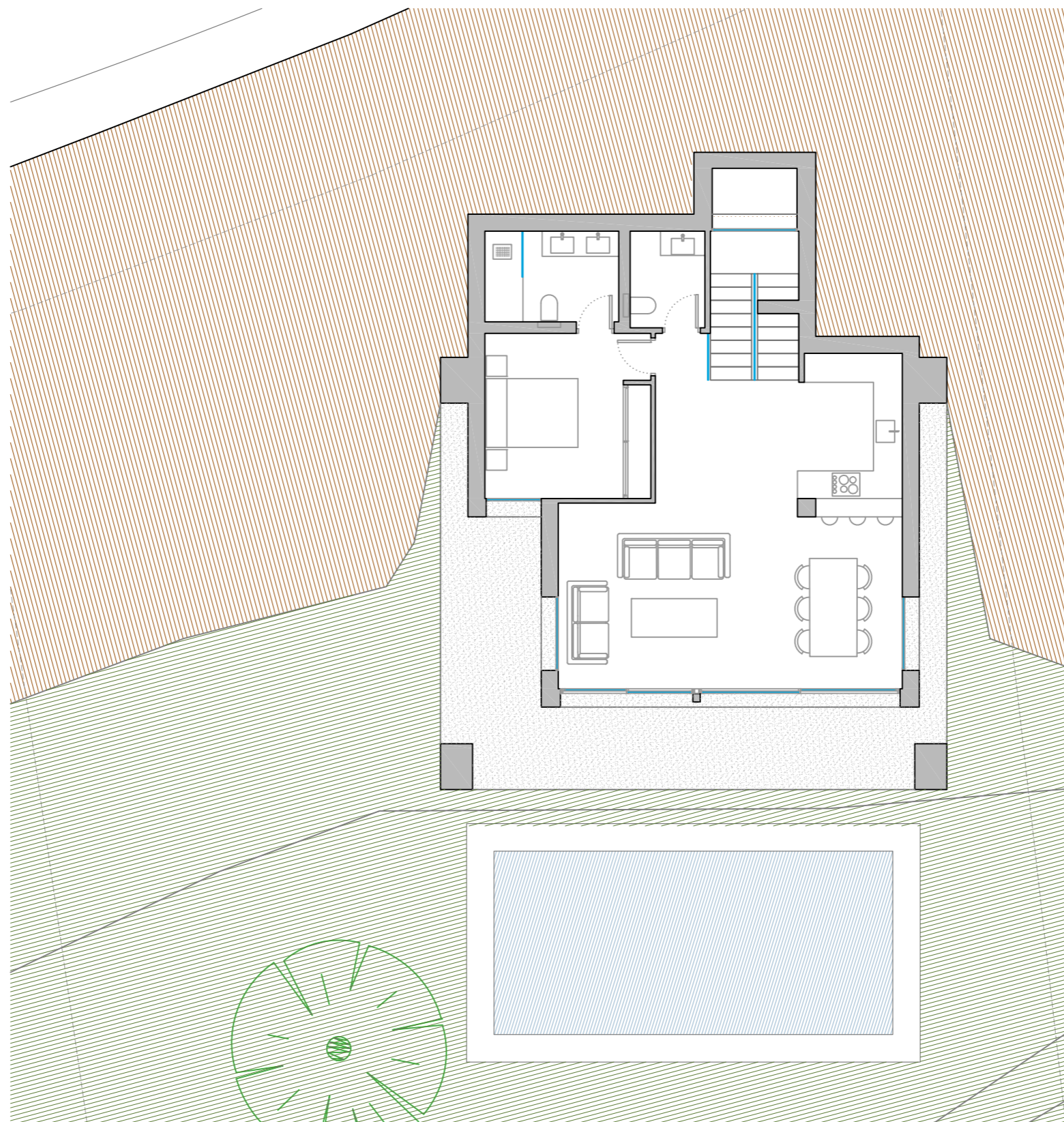
FIRST FLOOR

Built Area	88,68 m ²
Terraces	29,02 m ²

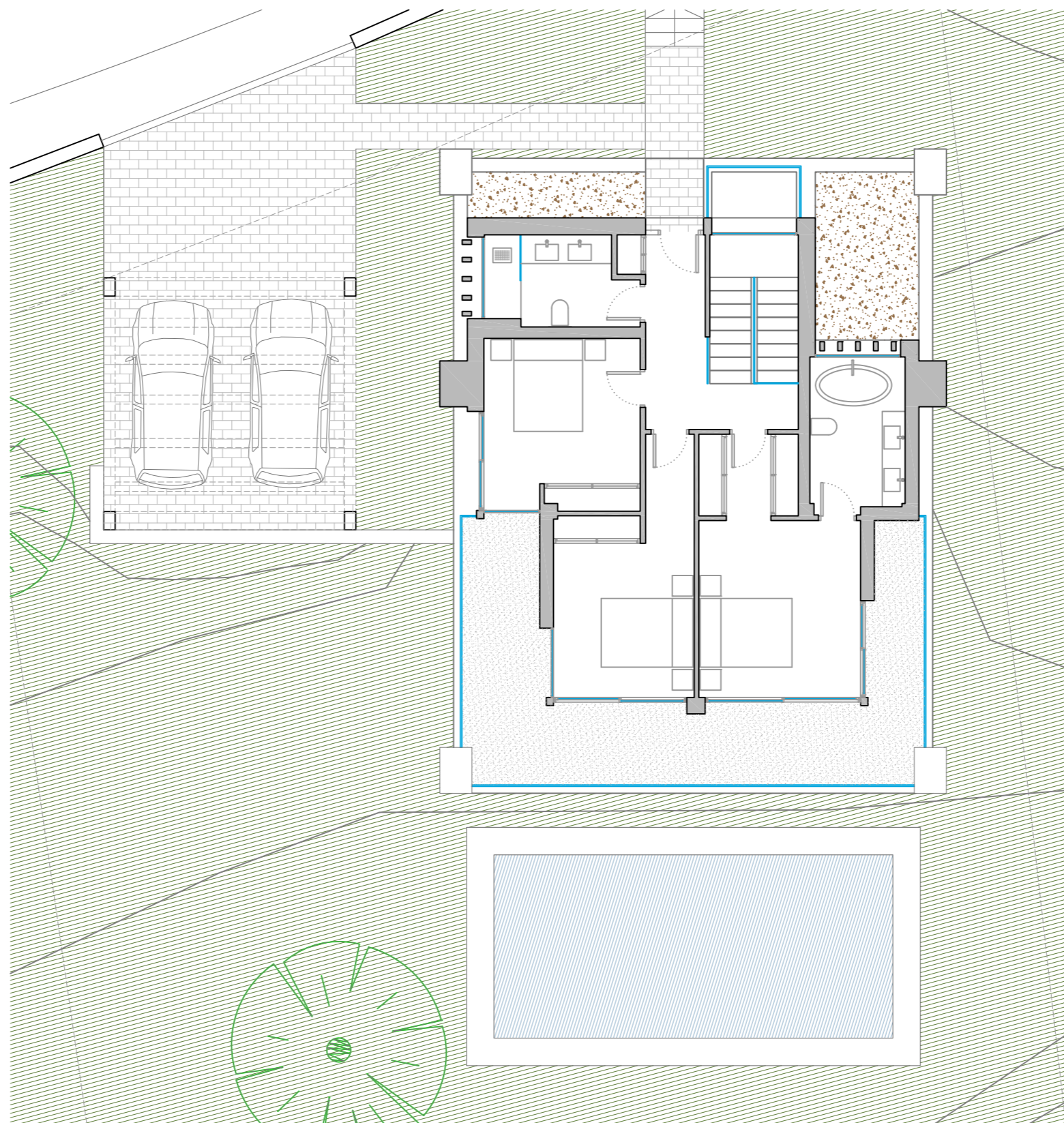
BASEMENT

Built Area	120,17 m ²
------------	-----------------------

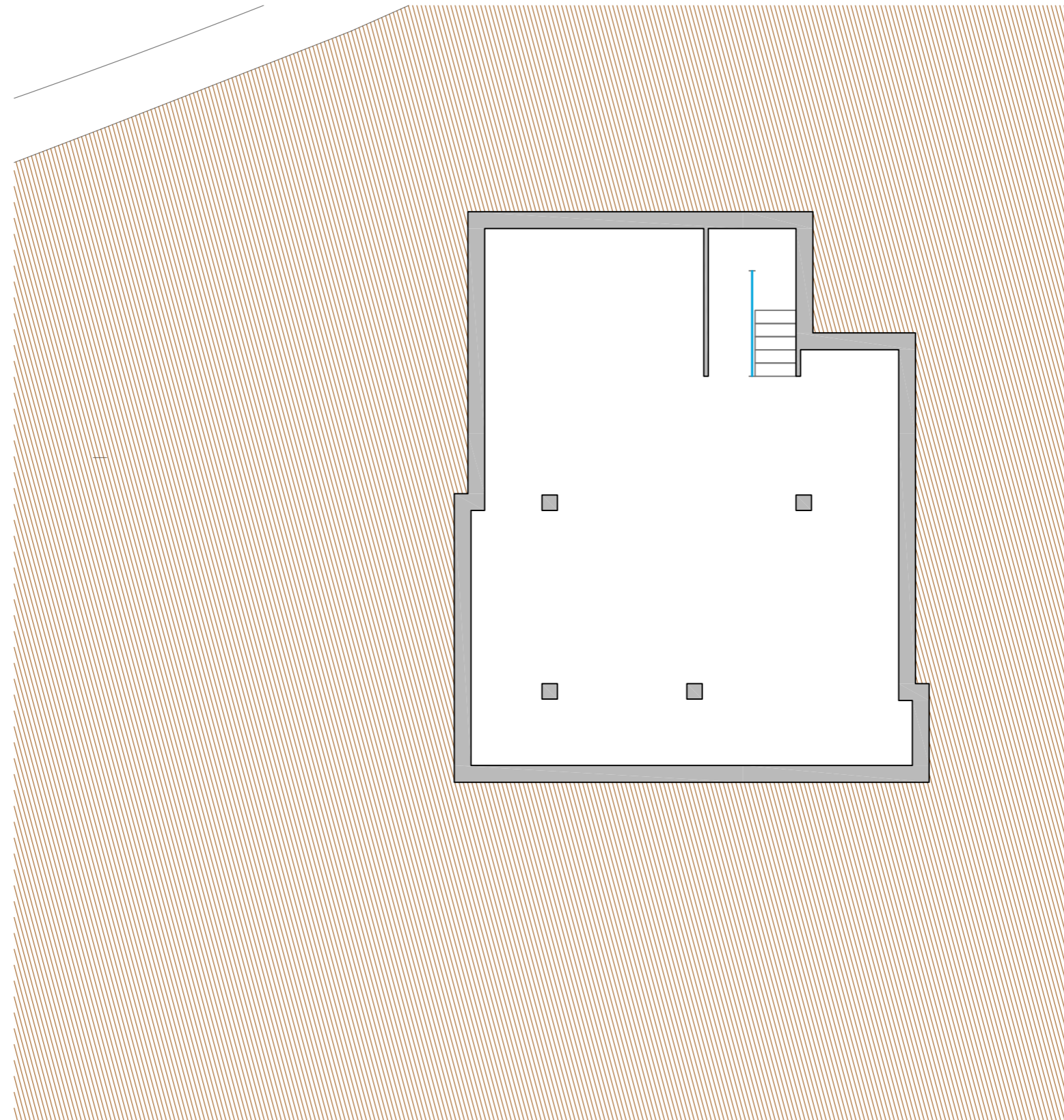




Built Area	98,05 m ²
Covered Terraces	33,08 m ²
Pool	34,8 m ²



Built Area	88,68 m ²
Terraces	29,02 m ²



Built Area

120,17 m²